

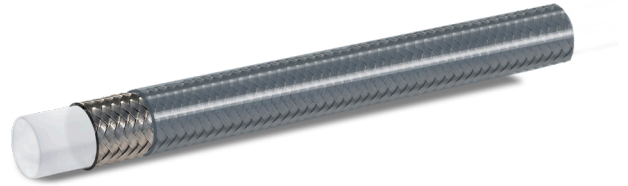
SPECIAL HOSEFLON® SW PU



SPECIAL HOSEFLON® | SUPERIOR PERFORMANCES & APPLICATIONS

GENERAL SPECIFICATIONS:

Extruded inner core made of natural PTFE certified in accordance with RoHS Directive and U.S. Federal Food and Drug Administration's (FDA) Regulation 21 CFR 177.1550. Outer reinforcement: one AISI 304L wire braid with high tensile strength. External cover in PU (poliuretane).



| INTERNAL DIAMETER | | WALL THICKNESS | OUTER DIAMETER | MINIMUM BEND RADIUS | MAXIMUM WP | MINIMUM BP |
|-------------------|------|----------------|----------------|---------------------|-------------|-------------|
| DN | mm | mm | mm | mm | bar at 23°C | bar at 23°C |
| 3 | 2.90 | 0.65 | 6.50 | 20 | 225 | 900 |

Maximum Working Pressures calculated using a Safety Factor of 4 | To guarantee quality and reliability of our products, all PTFE inner cores are tested under pressure.

OPTIONS:

Customized inner core construction (sizes, thickness). Other braid feasibility in AISI 316. Branding feasibility on the poliuretane transparent jacket.

APPLICATIONS:

High performances hose for bikes brake systems.

TEMPERATURES RANGES:

PTFE: -70°C / +260°C

TPU: -20 °C / +80 °C

Values and coefficients contained in this sheet are for information only and shall in no event be held to constitute or imply any warranty, undertaking, express or implied commitment. No liability whatsoever can be accepted by ITG SRL with respect to difference to the values reported in the tables or misuse by the Customer of the product.